

The following is an installation guide for install professionals for the Ultimate Lock[®] Residential 3000 series. It is recommended but not required, that customers use licensed and bonded locksmiths for installs to provide "keyed alike" installation services. If installers have any questions please contact us at 713-266-1400 and ask for installation assistance. Also please visit www.theultimatelock.com for more information on installing the Ultimate Lock[®].

Standard Inward Swinging Door

(note: if door swings inward from right to left the Ultimate Lock[®] logo will be upside down on the outside of the deadbolt)

Step one: Remove the existing deadbolt lock



Remove existing lock and save the unit until the new lock is successfully installed.

Step two: Install the deadbolt



Install the deadbolt with the "up" arrow pointing up for left hand swinging doors and "down" for right handed swinging doors. Before adding the screws to hold it in place, make sure the deadbolt plate is flush with the edge of the door. If the bore hole is too big and the deadbolt plate sinks in then proceed to add 4 number 4 screws to create a surface for it to sit on.

Step three: Insert cylinder and housing



Insert the cylinder and housing with the 2 cylinder screws that hold it all together. **Note that the cylinder and the housing have to be installed upside down for right hand swinging doors.** Make sure that the two screws that hold it all together are **snug and not too tight**. Over tightening will result in a collapsed hole for the gear to go into making it almost impossible to unlock and lock at the completion of the install.

Step four: Center the housing plate



After the housing plate is snugly fit align it to make sure it is straight with your speed square. This makes sure the lock stays straight. Loosen the screws a bit to allow the housing plate to move more freely to allow for corrections in positioning. It is a good idea at this point to test and see if the gear goes in and out of the hole easily, if it does not loosen the screws and try again.

Note: Make sure the tail piece is in the center of the hole

Step five: Pre-drill the main 6 screws



Place the platform plate on top of the housing plate and align them so the rounded corners match up perfectly. From here you pre-drill the 6 holes with the 1/8 drill bit. **Note: Be careful not to drill through the other side of the door.** Tip: You can also use a pencil or a hole punch to mark the holes and drill them without having to hold the platform plate in place.

Step six: Lubrication



Grab your can of Teflon and apply some to the black part of the housing plate, the security bar, and the gear. This will ensure that the lock feels as fluid as possible when locking or unlocking the lock. **Note: Shake the can well before use**

Step seven: Inserting the security bar



Take the security bar and the gear and proceed to place them on the lock. The backset should be adjusted to fit what type of door you're working on, whether it be $2 \frac{3}{8}$ or $2 \frac{3}{4}$. Most doors are going to fall under the $2 \frac{3}{8}$ backset setting. **Note: Make certain that the teeth on the gear start right on the desired backset.** (An arrow is there for selecting desired backset)

Step eight: Placing the platform plate on



Place the Platform plate and align the curved edges so they are perfectly on top of one another. **Note: At this point it is a good idea to test and see if everything feels smooth with the thumb knob. (If there is any tightness or the lock seems to not function properly, proceed to loosen up the screws holding the deadbolt. If problem still occurs, using sandpaper and a drill apply the gear to the drill and spin the gear and using the sandpaper to smooth it down. Finish by smoothing out gear with an Emery cloth.**

Step nine: Screwing on the platform plate



Set your power drill to about a 7 or an 8 torque and attach the 5/16 machine screw bit. From there go on to screw in all 6 #10 screws into the holes you pre-drilled earlier. **Note: For harder wood doors the torque may have to be upped a little bit.** Again proceed to check and make sure lock turns without any problems.

Step ten: Pre-drilling holes for the shock absorber



Place the shock absorber into opening of the lock (as seen on the left) and keep in place while drilling with a 1/8 drill bit. Make sure that the shock absorber is flush against the locking unit and pressed downward if there is a little wiggle room. **Note: When drilling be careful not to drill through the deadbolt lock, when you feel like you hit something stop drilling.**

Step eleven: Screwing in the shock absorber



Place the shock absorber into opening of the lock (as seen on the left) and keep in place while drilling with a 1/8 drill bit. Make sure that the shock absorber is flush against the locking unit and pressed downward if there is a little wiggle room. **Note: When drilling be careful not to drill through the deadbolt lock, when you feel like you hit something stop drilling.** (Again proceed to check and make sure lock turns without any problems. If lock seems rough to turn, using a flat head screwdriver, pry the lock on both sides to give some space)

Step twelve: Test the lock



Test the lock by inserting the thumb knob on the lock and proceed to open and close the lock. If the lock is rough then try to pry the lock with a flat head screw driver a little bit. For instructions on how to do this please watch our install video.

Step thirteen: Installing of the faceplate



Install the small screws into the faceplate to hold it onto the rest of the lock. **Do not over tighten! This will cause the lock to open and close roughly! NOTE: Don't forget to record the serial numbers on the inside of the face plate and to input them on your control panel.**

Step fourteen: Installing of the thumb knob



Insert the thumb knob on the door where the knob sits vertically when the lock is unlocked and horizontally when the lock is locked. The Ultimate lock logo should always read normally and not upside down when in the locked position. The screw that holds the lock can be installed as tight as your heart desires.

Step fifteen: Removing of the old strike plate



Remove the old strike plate from the door with a number 2 screwdriver

Step sixteen: Mark the guide lines for the UL strike plate



Open the lock, about 50%, just enough were the deadbolt hits the surface of the door jam. Once there mark the top and bottom of the deadbolt with a pencil. This creates to lines that will act as a guide for the striker plate you will install.

Step seventeen: Line the strike plate up with the two lines you drew



Place the striker plate on the surface of the door jam were the two lines that you drew line up perfectly inside the curved feet of the striker plate

Step eighteen: Mark the main holes with a pencil



After placing and holding the striker plate firmly in place in between the two lines you have made. Grab a number 2 pencil and mark on the inside of the main holes.

Step nineteen: Drill the holes for the strike plate



Using a 3/8 spade bit, or Dremmel tool, place it in on the marks you made on the inside of the main holes door jamb and dig into the wood enough that the dimples on the back of the striker plate sit flush on the door jamb.

Step twenty: If required, mortise out the door jamb for the striker plate



The lock should now fit flush on the inside of the door jamb. Do a test and close the door and see if the striker plate makes contact with the door. If it does not make contact, then you do not have to mortise the striker plate in the door jamb. If there is contact, even a little bit, then you must continue with step 20

Step twenty-one: Mortis out the door jamb

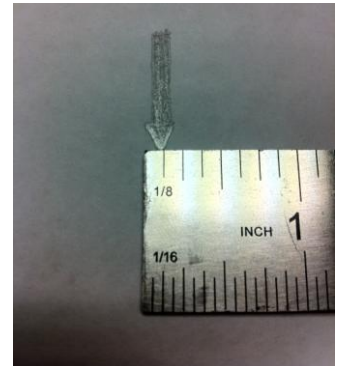


Mortis out the doorjamb with a cutting tool such as a Dremel multi-max, sonicrafter, or a wood chisel. Mortis out the hole for the strike plate enough were the striker plate and the door jamb are flush with each other

Step twenty-two: Aligning the striker plate



Place the striker plate on the door jamb and proceed to close the door. At this point try and align the striker plate where it is as close to the security bar as possible but not touching it. A good rule of thumb is that the striker plate and the security bar should not be more than 1/8 of space away from each other. Once you center and align the striker plate, mark its location with a pencil for placement location.



NOT AN ACCEPTABLE DISTANCE



Step twenty-three: Install the set screws



Go ahead and install the set screws into the lock in the position that you want it to stay in. It is important to note that before you install these screws that you pre-drill the holes either with a drill or with a hole punch.

Step twenty-four: Pre-drill the main screws



After the set screws have been installed, go ahead and proceed to pre drill the main screw holes with the drill bit that comes in the packaging. NOTE: Make sure you pre-drill the hole at least 3 ½ inches at a 30 degree angle in order to allow for the screw to go in without a problem. The screws are soft metal and will strip if not pre-drilled correctly.

Step twenty-five: Install the main screws



After you have pre-drilled the holes, proceed to install the main 3 ½ inch screws at a 30 degree angle. If you have a drill with a clutch installed on it set the clutch to about a 12 at low speed. Try to put as much force behind the screws as possible to avoid stripping. NOTE: The striker plate may be pulled back do to the install of the screws.

Step twenty-six: Final testing



After you install the screws your striker plate should look like this. Go ahead and test the lock and make sure everything is running smoothly. Some things to check for can be: If the door clears the striker plate (no rubbing), the acceleration distance is perfect (see pictures), and if the lock opens and closes properly.

Final Installation



Thank You

Please give us a call if you have any questions.

Please call us at 713-266-1400

or Email us at: jdaniels@theultimatelock.com