

INSTRUCTIONS FOR INSTALLATION OF THE "ULTIMATE LOCK" TUL-3000™

TOLL FREE HELP LINE: 1-866-MLS-4005 (1-866-657-4005)

IMPORTANT: The skill level to install this door Security System is the same as installing a deadbolt.

The warranty is only valid when the system is installed by a Professional locksmith or licensed contractor.

FOR LEFT AND RIGHT HAND DOORS THAT OPEN INTO THE STRUCTURE. A NEW 6-PIN ANTI-BUMP KEYLOCK CYLINDER, TWO KEYS AND A NEW DEADBOLT ARE INCLUDED.

SOLID 1-3/4" THICK WOOD DOORS ARE RECOMMENDED FOR MAXIMUM PROTECTION.

FOR ANY QUESTIONS, PLEASE CONTACT US ONLINE AT OUR WEBSITE www.theultimate.lock.com

1. Carefully unpack and check that all parts are provided in the package. Identify the parts from the expanded parts drawing Fig. 1. Record your locks' personal Serial Number and date installed: S/N _____ Date: _____ (Look for the S/N stamped or printed on the side of the Impact Cover #10 (15-18) or inside the Lock Cover 21).

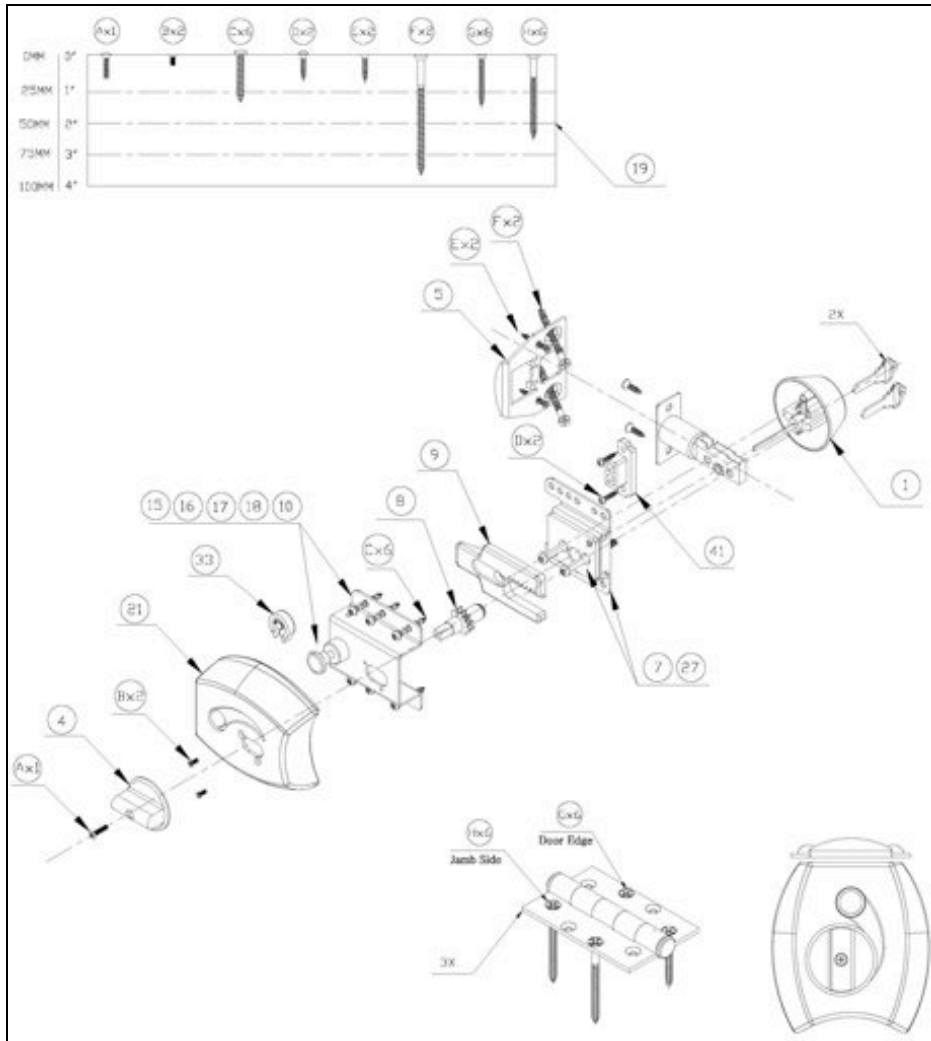


Figure 1

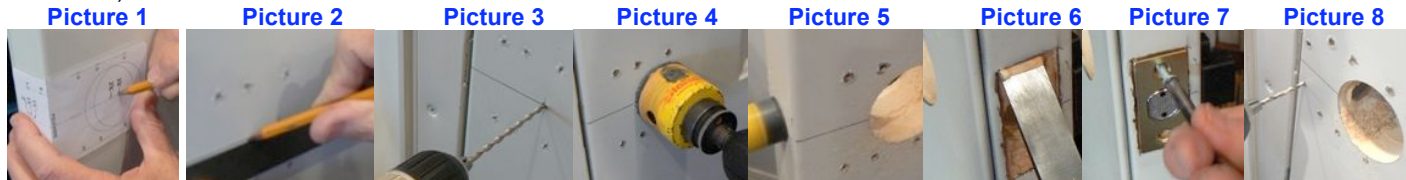
2. TOOLS NEEDED: Phillips #1 and #2 Screwdrivers, pencil or steel pawl, 1/16" (1,5 mm), 3/32" (2,5 mm) and 1/8" (3 mm) drill bits, 3/8" electric drill, hammer and 1/2" (13 mm) wood chisel, and tape measure. **NOTE: (A special 5" (121 mm) long x 5/32" (4 mm) diameter drill bit is provided for the two "F" power screws - See 14.)** Instruction pictures are for a left-hand door that swings inward, with hinges on the right when viewed from the inside. For right-hand doors, simply invert the deadbolt and the key lock position upside down so the key slot is at the top of the cylinder, and all the other parts simply reverse from how they are shown in the pictures.

3. REINFORCING DOOR HINGES: The hinge side of the door is just as important to strengthen as the lock side. **IF YOUR DOOR JAMB IS STEEL, PLEASE GO TO ITEM 4.)** Figure 1 above shows the twelve "G" and "H" screws provided to *dramatically increase the impact resistance* of the three combined door hinges. This **important step** is highly recommended to connect to the building structure, while also tightening any loose hinges and squaring the door to the door frame **before** the 3000 Lock is installed. Remove four screws from each of the three hinges and drill and install the twelve screws using the long drill as shown. The longer screws "H" go through the door jamb and into the building studs and the shorter screws "G" go into the edge of the door. In both cases, select the screws that enter more solid sections of the wood. This is also an excellent time to lubricate the hinge pins one at a time with any type of grease to stop squeaks and rust.

4. KEYLOCK AND DEADBOLT HOLES: Remove the current Keylock and Deadbolt system. If necessary, **increase** the hole through the edge of the door to 1" (25mm) diameter to accept the new deadbolt. If no holes exist for the new Millennium Keylock and Deadbolt, proceed with Item 5. Otherwise, continue at Item 6.

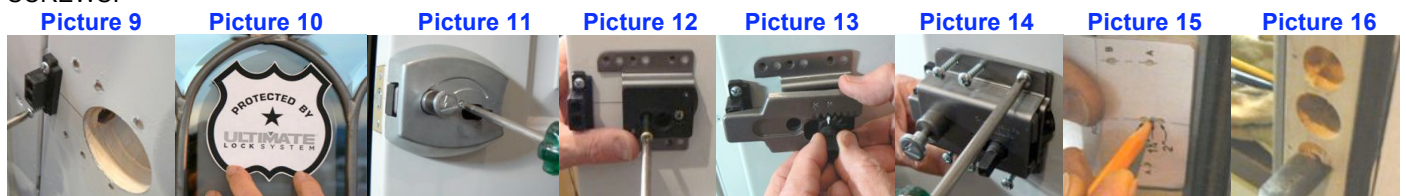
5. INSTRUCTIONS FOR INSTALLATION OF SINGLE CYLINDER DEADBOLTS: This group of new deadbolt holes should be located 5" to 6" (127-153 mm) above the door handle. Measure your existing door handle backset from the edge of the door, fold Template #2 and place on the high interior edge of the door and select either "A" 2-3/8" (60 mm) or "B" 2-3/4" (70 mm) backset to match your door handle. Mark one of the two large hole centers, as well as the six "C" hole locations and two "D" holes. (Picture 1). Also, from Template #2, mark one of the three "G" holes on the edge of the door corresponding to the actual thickness and center of the door.

6. IMPORTANT: IF YOUR DOOR IS A STEEL DOOR WITH A STEEL JAMB, PLACE THE TEMPLATE ON THE CENTERLINE OF THE RECESS PROVIDED IN THE STEEL DOOR JAMB FOR THE DEADBOLT STRIKER (USUALLY COVERED WITH A PLATE) AND DRAW A LINE ON THE DOOR (Picture 2). MATCH THE SAME BACKSET AS THE DOOR HANDLE, 2-3/8" "A" OR 2-3/4" "B". For either steel or wood doors, drill 5/32" (4mm) pilot holes "A" or "B" for both lock cylinder and deadbolt using the long drill provided. (Picture 3). Use a 2" to 2-1/8" (51-57 mm) diameter hole saw and drill from both sides of the door (Picture 4). If required, use a 2" (51 mm) long # 6b common nail from inside the large through hole through the pilot hole to mark the Striker #5 deadbolt hole location by making an indentation mark in the wood jamb. Then drill the 1" (25 mm) hole for the deadbolt (Picture 5) and mortise the new deadbolt faceplate 1/8" (3 mm) into the edge of the door (Picture 6). With deadbolt installed, drill two 3/32" (2mm) pilot holes 1" (25 mm) deep and install the two faceplate screws (Picture 7). Using the 1/8" (3mm) drill only, drill the six "C" holes 1-1/4" (31 mm) deep, using caution to avoid drilling through the door. (Hint: Mark 1-1/4" (31 mm) depth on drill with black pen or masking tape wrapped around the drill bit).



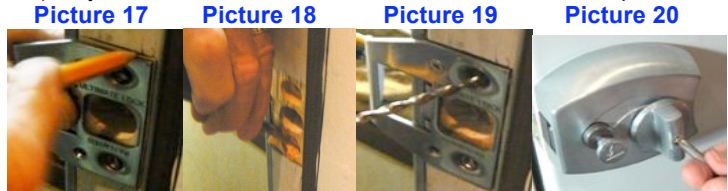
7. INSTALL BAR SUPPORT #41: Drill two 3/32" (2mm) x 1/2" (13 mm) deep holes at "D" (Picture 8). Hold #41 flush with edge of the door on centerline, with twin cavities closest to the door edge and install two "D" screws (Picture 9).

8. FIRST STAGE LOCK ASSEMBLY: If desired, apply I.D Shield Label to the outside of the door or a nearby window. (Picture 10) (*Notifies fire, police and criminals your door is kick proof, pick proof and bump proof*). Next, hold the new keylock in your left hand with the key way slot down, rotate the tailpiece (flat blade) fully clockwise and with the deadbolt retracted, insert lock tailpiece horizontal through the deadbolt cross hole. Install two long lock bolts through platform #7-27 into the lock cylinder, align the six (6) mounting holes in #7 stamping with the six holes "C" drilled in the door, and tighten both screws firmly (Picture 11). Insert lock key and check for correct operation of the deadbolt. (Key should be removable at both locked and unlocked positions of the deadbolt). If the lock does not function properly, the lock tailpiece is not engaged properly. **CAUTION:** DO NOT OVERTIGHTEN THE TWO LOCK SCREWS.



9. LAST STAGE LOCK ASSEMBLY: Hold #9 Security Bar in place and start #8 Gear into hole. Align arrow on first tooth of #8 Gear with backset number you have selected and engage matching gear teeth (Picture 12). Slip #10 Housing over 7-8-9-27, align 6 holes and install 6 "C" screws into door (Picture 13). Install Cover #21 with two machine screws "B" (Picture 14).

10. determine and mark centerline of Striker #5 on the door jamb. Use template #2 to mark 4 holes "E" and "F" (Picture 15).
11. Drill two 3/4" (19 mm) diameter holes at "F" 3/8" (10 mm) deep for clearance. If new lock is being installed, drill 7/8" or 1" diameter clearance for deadbolt 1" (25 mm) deep, if necessary (Picture 16).
12. Mark outline of Striker #5 (Picture 17) and mortise 3/32" (2.5 mm) deep as necessary so Striker #5 is flush with jamb (Picture 18).
13. Hook #5 Striker on door jamb edge and pilot drill the two "E" holes with 1/16" drill bit to prevent the wood edge from splitting. Install the two "E" screws into both E holes in the Striker. Close door and use lock key to confirm deadbolt enters striker without interference.
14. Use template #2 and drill two 5/32" (4 mm) holes 3-1/2" (90 mm) deep at 30° angle, and install 2 power screws "F" (Picture 19). If the door jamb is steel, drill the holes slowly. Screws "F" will pass through if wood is behind. If not, use #10 or #12 self-tapping screws.
15. Mount Twist Knob #4 vertical with Bar 9 retracted and secure it with screw "A" (Picture 20). DO NOT OVERTIGHTEN.
16. Close door and check operation with key and inside Knob – confirm that lock extends and retracts OK. Lock override Button (15-18) only functions when Bar #9 is in the extended locked position, rendering working keys, bump keys, lock-picking attempts useless.



YOU'RE ALL DONE!! BE SAFE, LOCK UP, AND SET THE SECONDARY OVERRIDE LOCKING PIN WHEN YOU RETIRE.

